

2017 ANNUAL REPORT

MUSLIM SOCIAL SERVICES

MSS - MISSION:

MSS aims to serve the community by providing culturally and spiritually sensitive programs, counseling services, and social assistance.

MSS - VISION:

MSS envisions an inclusive community that understands everyone's needs and provides support for all.

MSS - VALUES

Faith-based principles: Demonstrating the strengths and caring of the Islamic faith.

Inclusivity: Filling the gaps that prevent people from feeling they are a valued member of the Kitchener-Waterloo community

Compassion: Treating everyone in a sincere, generous, kind and compassionate manner

Respect: Treating all persons equally and fairly in an accepting and non-judgmental manner.

Confidentiality: Holding the highest regard for trust and privacy, and upholding the highest professional ethical standards.

Social Justice: Creating a society that encourages and celebrates the value of all persons

2017 at a glance

MESSAGE FROM THE BOARD CHAIR

Dr. Abdelfettah Elkchirid

At MSS, we have gone from virtually one person's dream, to now a well-established non-profit organization in our community. This transformation was the fruit of a collaborative effort, and commitment towards building a better community. Our Board members vision, our staff's engagement with the community, and our volunteers' dedication has made our transformation seem easier than it actually was.

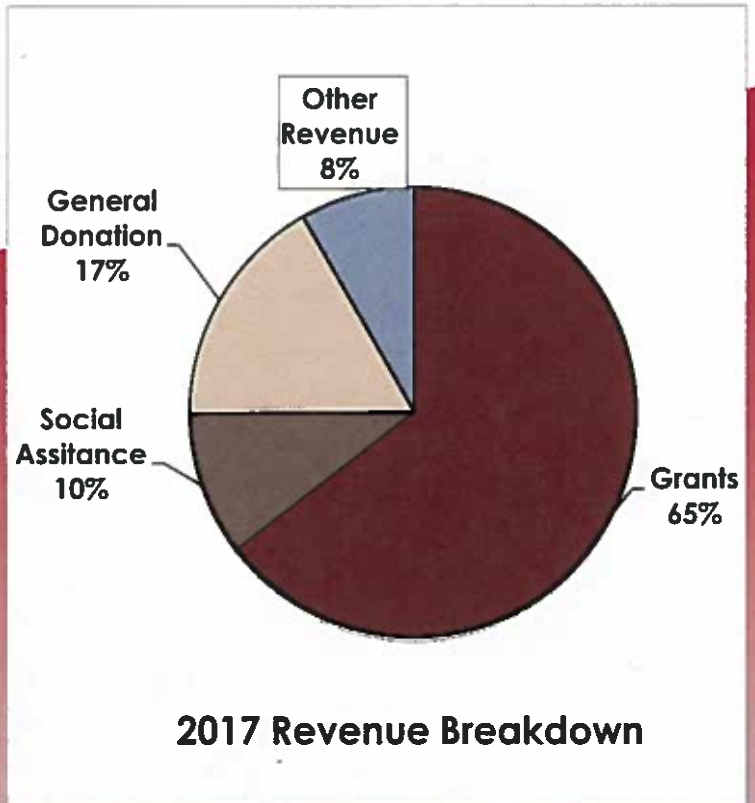
The genuine caring and expertise of our team coupled with the vision of our Board helped us develop much needed services to our community. The trust and support we receive from our funders and our network of community organizations have also provided us an added motivation to seek to offer more quality support to people we work with.

As members of the MSS Board of Directors, we would like to take this opportunity to renew our commitment working collaboratively with other local organizations and agencies to create a better community. I am pleased to see this commitment evident in our report of activities for the last year. We will seek to ensure that for years to come, we continue offering new programs, and improving on the ones we already have in place.

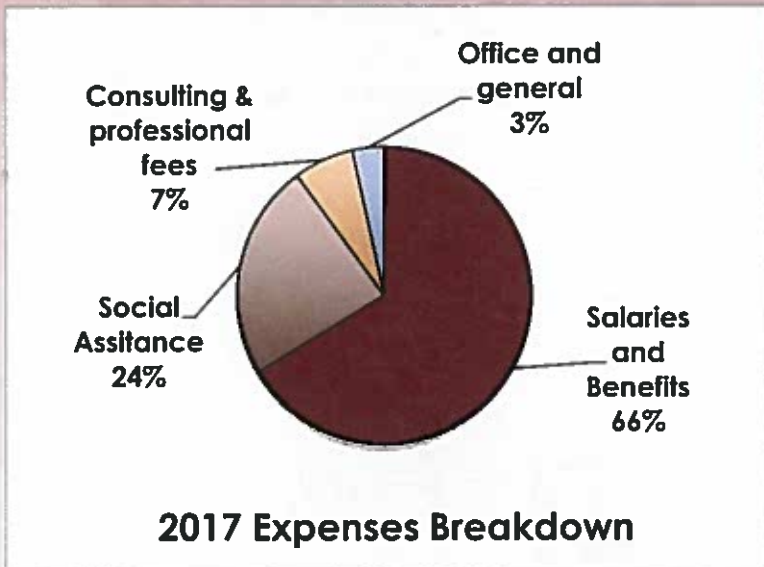
2017 PROGRAMS & SUPPORT

- Counselling.
- Psycho-educational workshops.
- Healing through Art Therapy Program.
- Healing through Music Therapy Program.
- I belong Seniors' group.
- Taste of Syria
- Ladies Tea Time.
- Welcome to Canada
- Intercultural competency training
- Lead the way youth Leadership Training program.
- Lead the way adult Leadership Training program
- St John Kitchen annual meal
- Habitat for Humanity Annual Volunteer Meal.
- Ramadan Food Drive.
- Give30 Campaign

2017 FINANCIALS



Net Assets	2017	2016
	\$76,622	\$31,785
Revenue		
Grants	\$67,779	\$78,239
Social Assistance	\$10,865	\$11,087
General Donations	\$17,657	\$6,485
Other Revenue	\$8,724	\$1,588
	\$105,025	\$97,399



Expenses	2017	2016
Salaries and Benefits	\$57,804	\$53,467
Social Assistance	\$20,472	\$23,324
Consulting & professional fees	\$5,750	\$11,000
Office and general	\$3,042	\$4,046
	\$87,068	\$93,853
Excess Revenue	\$13,442	\$14,822

THANK YOU TO OUR 2017 FUNDERS



LYLE S. HALLMAN
FOUNDATION



Contact us:

The Family Centre Hub,
65 Hanson Avenue
Kitchener, ON N2C 2H6
519 – 772-4399 ext. 2707

Visit us on:



@MSSofKW



@MSS_KW